

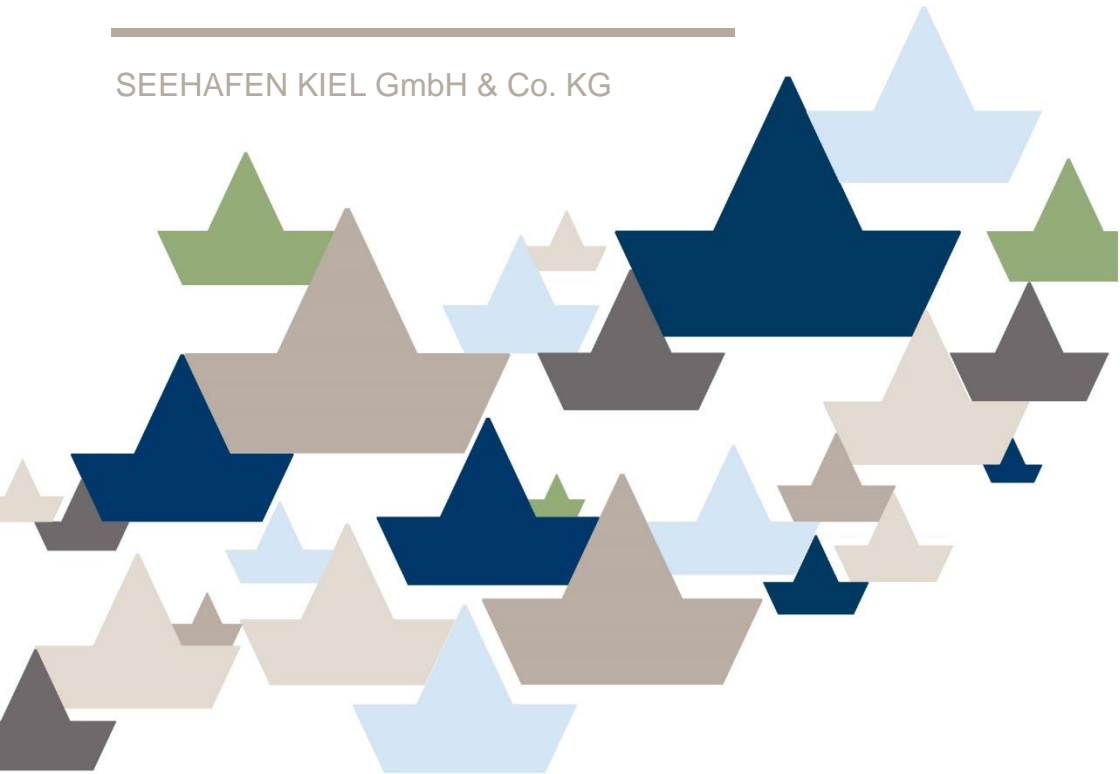


PORT OF KIEL

# KIEL PORT AND QUAY TARIFF 2023

---

SEEHAFEN KIEL GmbH & Co. KG



# CONTENT

---

<b>GENERAL</b> .....	<b>3</b>	<b>OTHER VEHICLES</b> .....	<b>13</b>
1. Principle and scope of application .....	3	24. Port charges.....	13
2. Parties liable.....	3	25. Quay charge.....	14
3. Accrual of charges.....	3	<b>OTHER CHARGES</b> .....	<b>15</b>
4. Obligation to notify.....	3	26. Annual port charges .....	15
5. Principles of assessment.....	3	27. Ship disposal charge.....	16
6. General exemptions.....	4	28. Ship wastewater .....	16
7. Further exemptions and reductions from port charges.....	5	29. Water charge (fresh water) .....	16
8. Security regulations according to International Ship and Port Security (ISPS) 5		30. Ship demurrage fee .....	17
9. Conversion principles .....	5	31. Area charge .....	17
<b>FERRIES</b> .....	<b>6</b>	32. Storage under roof.....	17
10. Port charges .....	6	33. Electricity charge.....	17
11. Quay charge .....	6	34. Crane fee.....	18
12. Terminal charge .....	7	35. Provision of personnel .....	18
<b>FREIGHT SHIPS</b> .....	<b>8</b>	36. Management costs.....	18
13. Port charges.....	8	<b>APPENDIX</b> .....	<b>19</b>
14. Quay charge.....	8	<b>BANK DETAILS</b> .....	<b>21</b>
15. Terminal charge .....	8	<b>NOTES</b> .....	<b>21</b>
<b>CONTAINER SHIPS</b> .....	<b>9</b>	<b>CHARGEABLE PORT AREA</b> .....	<b>22</b>
16. Port charges.....	9	<b>INCEPTION</b> .....	<b>23</b>
17. Quay charge .....	9	<b>IMPRINT</b> .....	<b>23</b>
18. Terminal charge .....	9		
<b>INLAND SHIPS</b> .....	<b>10</b>		
19. Port charges.....	10		
20. Quay charge .....	10		
<b>TUGS, ICEBREAKERS</b> .....	<b>11</b>		
21. Port charges.....	11		
<b>TANKERS</b> .....	<b>12</b>		
22. Port charges .....	12		
23. Quay charge .....	12		

You can also find the current and valid version of the tariff online. Enter the link or simply scan the QR code.



[WWW.PORTOFKIEL.COM/TARIFE-AB.HTML](http://WWW.PORTOFKIEL.COM/TARIFE-AB.HTML)

# GENERAL

---

## 1. PRINCIPLE AND SCOPE OF APPLICATION

This tariff is based on the General Conditions for the Use of the Quay Facilities of the SEEHAFEN KIEL GmbH & Co. KG (PORT OF KIEL) in their current version which can be sent on request.

The contents of this tariff refer exclusively to the types of ships mentioned here as well as other watercraft that are not cruise ships. The regulations and charges for cruise ships are listed in a separate tariff. The chargeable port area is determined in accordance with § 1.2 of the aforementioned General Conditions and is shown in the appendix to this tariff.

## 2. PARTIES LIABLE

Parties liable are the principals, users, consignees and owners of the cargo as well as the ship owners.

## 3. ACCRUAL OF CHARGES

The claim to the fee arises with the use of the port and the utilisation of the service.

- Annual port charges and other charges paid for the calendar year or other specified periods shall be paid for the full accounting period even if the obligation to pay arises or ceases in the course of that period.
- Charges for single journeys or temporary use shall not be offset against charges payable for specific periods.
- Quay charges are payable for the use of the quay facilities for loading and unloading ships. Quay charges are payable for cargo, cargo units and passengers. Quay charges are due for loading and unloading even if the cargo is handled directly from ship to ship. The weight of the cargo is not charged separately and is included in the quay charges for the cargo unit.

## 4. OBLIGATION TO NOTIFY

The principal (owner and driver) or agent (e.g. shipbroker) must immediately provide the data required for the calculation of charges and substantiate this by submitting clear documents (e.g. ship manifest, cargo and transport documents). The corresponding notifications are preferably to be made via the Ship and Cargo Declaration System (SCD) of the PORT OF KIEL and the Kiel Port Authority.

However, the vehicle drivers and owners remain responsible for the complete and correct notification.

Special notification obligations apply to the owners of vehicles for which annual port fees are charged; please refer to the chapter on “Other charges” starting on page 15.

## 5. PRINCIPLES OF ASSESSMENT

- Sea-going ships are charged according to gross tonnage (GT).
- For open container ships, the reduced gross tonnage is not taken into account.

- Barges, with the exception of inland tankers, shall be charged according to the maximum deadweight tonnage (gauge tonnes) shown on the calibration certificate.
- The port charges are charged per port call. A port call is defined as one arrival and one departure.
- Tugboats, icebreakers and rescue vehicles are charged according to engine power.
- In the case of watercraft without their own propulsion, the base area is calculated as the basis for assessment by multiplying the greatest length by the greatest width of the vehicle in square metres. The length is rounded up to full metres, the width to half metres.
- Started units of measurement are charged in full.
- Passengers are all persons carried by ships. The crew of the ship is excluded.
- Loading units within the meaning of this tariff are containers, swap bodies and trailers as well as vehicles of all kinds. Rollflats and cassettes are not loading units.
- Passenger motor vehicles in this tariff are automobiles, motorbikes, motor caravans and buses as well as combinations of motor vehicles with caravans or trailers. Cars and caravans are counted as one unit, whereby the total length of the car and caravan is decisive for the classification with regard to quay charges and terminal charges.
- Cargo within the meaning of this tariff are all objects/items that are not loading units.
- Liner services are regular year-round transport connections of a shipping company with a fixed timetable.

The rates of this tariff are net rates. In the case of services subject to turnover tax, VAT shall be added in accordance with the statutory provisions.

## 6. GENERAL EXEMPTIONS

Exempt from payment of port charges, ship demurrage fees and minimum use charges under this tariff are the following:

- ships of the German Federal Armed Forces,
- ships used for sovereign tasks or research tasks of the federal government, the state or the State Capital City of Kiel,
- pilot boats, fire-fighting boats and lifeboats, if they are used for their intended purpose,
- foreign government ships flying their state flag and used only for state purposes, if mutual agreement is guaranteed, if the facilities of the PORT OF KIEL are used, the exemption is valid for 48 hours,
- dinghies and launches belonging to ships and equipment subject to a charge or exempt under this tariff if they are used in accordance with their purpose and do not occupy a permanent berth,
- boats used only for rowing,
- training boats (with the exception of sports boats) which are only used for training purposes, provided that the facilities of the PORT OF KIEL are used, the exemption applies for a maximum of 48 hours,
- pleasure craft up to 20 m in length that temporarily navigate the port area (visitors) in order to reach facilities that are not owned by the PORT OF KIEL,

- guest ships of the Museumshafen Kiel e.V. in the Germania harbour without commercial passenger voyages with a measurement of up to 60 GT for a maximum of 48 hours.

## 7. FURTHER EXEMPTIONS AND REDUCTIONS FROM PORT CHARGES

Over and above the general exemptions are exempt from port charges, but notwithstanding the calculation of minimum use charges and ship demurrage fees:

- ships and other vessels using the port area without loading or unloading for a period of 24 hours,
- disabled vessels which call at the port area as an emergency port,
- ships built in Kiel and leaving the port area empty for the first time (including sea trials), ships leaving a facility in the port area to unload or load at another facility in the port area, if the higher charge has already been paid.

## 8. SECURITY REGULATIONS ACCORDING TO INTERNATIONAL SHIP AND PORT SECURITY (ISPS)

Solely the PORT OF KIEL or a third party commissioned by it carries out security measures at its port facilities and terminals in accordance with the statutory requirements for port facility security and charges a security fee for this.

The security fee is payable for the use of the facilities by ships > 500 GT, passenger ships falling under the ISPS Code or mobile offshore installations.

Ships operating on fixed routes in short sea shipping may be exempted from paying the security charge if a bilateral or multilateral agreement on alternative security arrangements exists between the Federal Republic of Germany and the port states concerned and a Permanent Declaration of Security (PDOS) is in place.

For security level 1, the security fee is paid with the payment of the terminal charge and/or quay charge. Separate security charges are payable for operation at security level 2 and above.

## 9. CONVERSION PRINCIPLES

For transhipment of timber, if exact weight data are missing, the following shall be used as a basis for calculating the charges:

Softwood logs:	1 cbm of logs	= 0.45 t
Hardwood logs:	1 cbm of logs	= 0.60 t
Sawn timber:	1 m <sup>3</sup>	= 0.56 t

Abbreviations used:

GT	= gross tonnage
t	= ton
cbm	= cubic metre
kW	= kilowatt
kWh	= kilowatt hour

# FERRIES

---

Including Ro-Ro ships,  
Ro-Pax ships, Con-Ro ships

---

## 10. PORT CHARGES

per port call	per GT	0.18 €
in year-round regular service per port call	per GT	0.055 €

### SHIP DEMURRAGE FEE

In addition to the port charges, a demurrage fee is payable from 0.00 hours on the third day for vessels that use a berth and stay in the port area for more than two days.

per day commenced	per GT	0.08 €
-------------------	--------	--------

A separate demurrage fee can be agreed for vessels that use a berth in the port of Kiel for longer than 3 weeks.

---

## 11. QUAY CHARGE

### PER ARRIVAL AND DEPARTURE

accompanied loading units with drivers	per unit	11.50 €
unaccompanied loading units	per unit	8.50 €
new passenger cars for import and export	per unit	4.50 €
rollflats and cassettes (loaded with cargo)	per ton of cargo	0.75 €
passengers	per person	1.45 €
passenger motor vehicles under 6 metres	per unit	5.00 €
passenger motor vehicles from 6 metres	per unit	6.00 €

### STO-RO AND LO-LO CARGO

Sto-Ro and Lo-Lo cargo refers to direct loading on or from the ship's deck using on-board or third-party ground handling equipment and cranes. Quay charges are payable according to the weight of the cargo.

Sto-Ro or Lo-Lo cargo	per ton	0.65 €
for arrival and departure together at least		28.00 €

---

---

## 12. TERMINAL CHARGE

---

A terminal charge is levied for the use of the terminal infrastructure and the digital systems as well as the restricted port areas of PORT OF KIEL secured by entry and exit controls for passenger vehicles over 6 metres and loading units arriving or departing by ship. Import and export new passenger cars are exempt from the terminal charge.

---

### PER ARRIVAL AND DEPARTURE

loading unit by road	per unit	6.50 €
loading unit by rail	per unit	3.25 €
passenger motor vehicle from 6 metres	per unit	6.50 €

---

# FREIGHT SHIPS

---

## 13. PORT CHARGES

---

per port call	per GT	0.40 €
---------------	--------	--------

Cargo ships using the port area for a maximum of 24 hours without loading or unloading, or for which the weight of the cargo handled in the PORT OF KIEL is less than one third of their deadweight tonnage or hold capacity, pay a minimum use charge.

minimum use charge per port call	per GT	0.14 €
----------------------------------	--------	--------

but at least	per port call	28.00 €
--------------	---------------	---------

---

### SHIP DEMURRAGE FEE

In addition to the port charges, a demurrage fee is payable from 0.00 hours on the third day for vessels that use a berth and stay in the port area for more than two days.

per day commenced	per GT	0.08 €
-------------------	--------	--------

A separate demurrage fee can be agreed for vessels that use a berth in the port of Kiel for longer than 3 weeks.

## 14. QUAY CHARGE

---

### PER ARRIVAL AND PER DEPARTURE

cargo	per ton	0.65 €
-------	---------	--------

per arrival and per departure together at least	per unit	28.00 €
---	----------	---------

Regarding quay charge for loading units, please refer to the chapter on “Ferries”, section 11 (page 6).

---

## 15. TERMINAL CHARGE

---

A terminal charge is levied for the use of the terminal infrastructure and the digital systems as well as the restricted port areas of PORT OF KIEL secured by arrival and exit controls for passenger vehicles over 6 metres and loading units arriving or departing by ship.

### PER ARRIVAL AND DEPARTURE

loading unit by road	per unit	6.50 €
----------------------	----------	--------

loading unit by rail	per unit	3.25 €
----------------------	----------	--------

---



# CONTAINER SHIPS

---

## 16. PORT CHARGES

per port call	per GT	0.18 €
In year-round regular service per port call	per GT	0.09 €
<p>Container ships using the port area for a maximum of 24 hours without loading or unloading, or the weight of the cargo handled in the PORT OF KIEL is less than one third of their deadweight tonnage or hold capacity pay a minimum use charge.</p>		
Minimum use charge per port call	per GT	0.14 €
but at least	per port call	28.00 €

## SHIP DEMURRAGE FEE

In addition to the port charges, a demurrage fee is payable from 0.00 hours on the third day for vessels that use a berth and stay in the port area for more than two days.

per day commenced	per GT	0.08 €
-------------------	--------	--------

A separate demurrage fee can be agreed for vessels that use a berth in the port of Kiel for longer than 3 weeks.

---

## 17. QUAY CHARGE

### PER ARRIVAL AND PER DEPARTURE

for containers handled by crane	per unit	8.50 €
---------------------------------	----------	--------

---

## 18. TERMINAL CHARGE

For the use of the terminal infrastructure and the digital systems as well as the restricted port areas of PORT OF KIEL secured by entry and exit controls, a terminal charge is levied for loading units arriving or departing by ship.

### PER ARRIVAL OR DEPARTURE

loading unit by road	per unit	6.50 €
loading unit by rail	per unit	3.25 €

# INLAND SHIPS

---

## 19. PORT CHARGES

---

per port call	per calibrated ton	0.20 €
---------------	--------------------	--------

Inland ships that use the port area for a maximum of 24 hours without loading or unloading, or the weight of the cargo handled in the port of Kiel is less than one third of their deadweight tonnage or hold capacity pay a minimum use charge.

Minimum use charge per port call	per calibrated ton	0.070 €
----------------------------------	--------------------	---------

but at least	per port call	28.00 €
--------------	---------------	---------

---

### SHIP DEMURRAGE FEE

In addition to the port charges, a demurrage fee is payable from 0.00 hours on the third day for vessels that use a berth and stay in the port area for more than two days.

per day commenced	per calibrated ton	0.04 €
-------------------	--------------------	--------

A separate demurrage fee can be agreed for vessels that use a berth in the port of Kiel for longer than 3 weeks.

## 20. QUAY CHARGE

---

### PER ARRIVAL AND PER DEPARTURE

cargo	per ton	0.65 €
-------	---------	--------

passengers	per person	1.45 €
------------	------------	--------

per arrival and per departure together at least		28.00 €
---	--	---------

Regarding quay charges for loading units, please refer to the chapter on “Ferries”, section 11 (page 6).

---

# TUGS, ICEBREAKERS

---



---

## 21. PORT CHARGES

---

per port call	per kW	0.32 €
---------------	--------	--------

Tugs with and without tow, as well as icebreakers using the port area for a maximum period of 24 hours, pay a minimum use charge.

minimum use charge per port call	per kW	0.14 €
----------------------------------	--------	--------

but at least	per port call	28.00 €
--------------	---------------	---------

---

## SHIP DEMURRAGE FEE

In addition to the port charges, a demurrage fee is payable from 0.00 hours on the third day for vessels that use a berth and stay in the port area for more than two days.

per day commenced	per kW	0.24 €
-------------------	--------	--------

A separate demurrage fee can be agreed for vessels that use a berth in the port of Kiel for longer than 3 weeks.

# TANKERS

---

Tankers include, but are not limited to, inland waterway ships, gas tankers and chemical tankers.

---

## 22. PORT CHARGES

---

In the case of double-hull tankers, the volume of the double hull - provided this is shown separately in the measurement certificate - shall be disregarded.

per port call	per GT	0.70 €
	per calibrated ton	0.35 €

Tankers using the port area for a maximum of 24 hours without loading or unloading, or the weight of the cargo handled in the PORT OF KIEL is less than one third of their deadweight tonnage or hold capacity pay a minimum use charge.

Minimum use charge per port call	per GT	0.14 €
	per calibrated ton	0.070 €
but at least	per port call	28.00 €

---

### SHIP DEMURRAGE FEE

In addition to the port charges, a demurrage fee is payable from 0.00 hours on the third day for vessels that use a berth and stay in the port area for more than two days.

per day commenced	per GT	0.08 €
-------------------	--------	--------

A separate demurrage fee can be agreed for vessels that use a berth in the port of Kiel for longer than 3 weeks.

---

## 23. QUAY CHARGE

---

### PER ARRIVAL AND PER DEPARTURE

Cargo	per ton	0.65 €
-------	---------	--------

Tankships bunkering other ships are exempt from paying quay charges.

---

## OTHER VEHICLES

---

Other vehicles include, but are not limited to, excursion ships, non-scheduled passenger ships, pontoons, rescue and offshore ships, pleasure craft, motor yachts and sailing ships (over 20 m in length) and guest berths (recreational boats, motor yachts and sailing vessels under 20 m in length).

---

### 24. PORT CHARGES

per port call	per GT	0.47 €
	or per m <sup>2</sup> of base area	1.19 €
guest berth	per day (incl. VAT)	34,57 €

Other vehicles that use the port area for a maximum of 24 hours without loading or unloading, or the weight of the cargo handled in the PORT OF KIEL is less than one third of their carrying or hold capacity or that use Berth 9b in Ostuferhafen, pay a minimum use charge.

minimum use charge per port call	per GT	0.14 €
but at least	per port call	28.00€

---

### SHIP DEMURRAGE FEE

In addition to the port charges, a demurrage fee is payable from 0.00 hours on the third day for vessels that use a berth and stay in the port area for more than two days.

per day commenced	per GT	0.08 €
-------------------	--------	--------

For other ships that use a berth for more than 2 days and do not have a GT measurement pay per 30 days or part thereof

per day commenced	per m <sup>2</sup> base area	0.04 €
-------------------	------------------------------	--------

A separate demurrage fee can be agreed for vessels that use a berth in the port of Kiel for longer than 3 weeks.

---

## 25. QUAY CHARGE

---

### PER ARRIVAL AND PER DEPARTURE

cargo	per ton	0.65 €
passengers	per person	1.45 €
for arrival and departure together	at least	28.00 €

for quay charges for loading units see the chapter on „Ferries“, section 11 (page 6).

---

# OTHER CHARGES

---

## 26. ANNUAL PORT CHARGES

---

The payment of the annual port charges covers navigation within the port area as well as the ship demurrage fee. Annual port charges may be granted upon application, the owners of the ships shall indicate the following:

- Registration of vehicles in the calendar year with all data required for the calculation of the fee by 15th January each year;
- Within 2 working days, notification of vehicles placed in or withdrawn from operation in the course of the calendar year;
- Immediate notification of a change of purpose or ownership of the vehicles.

For ships that carry passengers across the Kiel Fjord as part of scheduled local public transport services and for passenger ships that carry out regular excursion and harbour tours on the Kiel Fjord for an uninterrupted period of at least three months within a calendar year, there is to pay:

Per calendar year for each person authorised for passenger transport by the regulatory authority	per person	15.60 €
but at least		654.00 €

If the above-mentioned ships pay annual port charges, cross the sea border (the connecting line between the Bülk lighthouse and the Laboe Naval Memorial) and call at other ports except for maintenance and repair purposes, these voyages and the use of the quay facilities must be reported immediately and are charged separately.

per voyage	per GT	0.27 €
------------	--------	--------

### ANNUAL PORT CHARGES FOR SHIPS OTHER THAN THOSE MENTIONED ABOVE PER CALENDAR YEAR

Cargo ships exclusively carrying cargo on the Kiel Fjord to the sea border	per GT	4.38 €
Tugs, icebreakers and rescue ships	per kW	2.77 €
Other ships	per m <sup>2</sup> base area	4.52 €
Inland ships	per GT	2.19 €

---

**27. SHIP DISPOSAL CHARGE**

PER PORT CALL AND PER GT	GT SIZE	RATE PER GT	MAXIMUM QUANTITY OF SHIP-GENERATED WASTE
for ships with a passenger capacity of more than 12 passengers and a size	up to 500 GT	0.126 €	max. 1.1 m <sup>3</sup>
	>from 501 GT	0.058 €	max. 5.0 m <sup>3</sup>
	>from 5,001 GT	0.048 €	max. 15.0 m <sup>3</sup>
	>from 20,001 GT	0.043 €	max. 20.0 m <sup>3</sup>
	>from 40,001 GT	0.037 €	max. 40.0 m <sup>3</sup>
	>from 75,001 GT	0.033 €	max. 60.0 m <sup>3</sup>
	>from 100,001 GT	0.027 €	max. 75.0 m <sup>3</sup>
for all other ships with a size	up to 10,000 GT	0.031 €	max. 2.2 m <sup>3</sup>
	from 10,001 GT	0.033 €	max. 5.0 m <sup>3</sup>
per vehicle and call		at least	16.40 €
if the maximum quantities are exceeded		per extra m <sup>3</sup>	52.50 €

The maximum quantities indicated refer to ship-generated waste according to Marpol Annex V.

A separate ship disposal charge may be agreed for vessels calling at the port of Kiel on regular scheduled services more than 150 times per calendar year.

**28. SHIP WASTEWATER**

acceptance and disposal of grey and/or black water	per m <sup>3</sup>	3.00 €
	by tank truck/barge	upon request

**29. WATER CHARGE (FRESH WATER)**

A water charge is payable for the taking of drinking and boiler water directly at the quay facilities.

for a purchase of up to 100 m <sup>3</sup>	per m <sup>3</sup>	4.00 €
for each additional m <sup>3</sup>		2.75 €
but at least		17.50 €



---

### 30. DEMURRAGE FEE

---

Demurrage fees are payable for the parking of vehicles and loading units in the port. The demurrage fee is payable from the second day (00:00 hrs) after the day of arrival in the port for each day commenced. Sundays and public holidays are free of demurrage fees. Empty loading aids belonging to the shipping company are exempt from demurrage fees.

Schwedenkai	per unit and day	24.00 €
Norwegenkai	per unit and day	24.00 €
Ostuferhafen	per unit and day	10.00 €

Loading units arriving and departing exclusively by rail or road may - subject to free capacity - only be parked in the port after agreement of a separate demurrage fee. Demurrage charges for intermodal loading units and new vehicles can be adjusted.

---



---

### 31. AREA CHARGE

---

For the use of quay areas for which ship demurrage fees are not already payable under this tariff or for which a rental or lease agreement has been concluded, an area charge shall be payable. The area fee shall be agreed per m<sup>2</sup> or per t or m<sup>3</sup>.

The use of quay areas requires the prior consent of the PORT OF KIEL, which in particular determines the size and location of the area and assesses the area used by its own measurements. Even after consent has been granted, the PORT OF KIEL is entitled at any time to prohibit the use of the quay area for reasons of port operation and to demand that the area be vacated within a period of at least 24 hours. Any fees paid in advance will be refunded.

---



---

### 32. STORAGE UNDER ROOF

---

Special fees are agreed for storage under roof.

---



---

### 33. ELECTRICITY CHARGE

---

An electricity charge is payable for the use of electricity, which is calculated according to consumption. Special fees may be agreed with large consumers and permanent users. This also applies to the electricity consumption of official vehicles that serve public safety and order.

per kWh	0.95 €
Connection fee per connection	27.00 €

---

---

**34. CRANE FEE**

---

A crane fee is payable for the use of cranes with crane operators. The crane fee includes the assignment of the crane operator within regular working hours. Outside the regular working hours, surcharges shall be calculated in accordance with the section "Provision of personnel".

---

FOR SEA HANDLING PER CRANE AND PER HOUR OR PART THEREOF

for handling cargo in hook operation	up to 25 t	270.00 €
	up to 40 t	430.00 €
	up to 65 t	500.00 €
	up to 100 t	690.00 €
	over 100 t	upon request
for handling bulk cargo in grab operation		upon request
for the handling of containers per crane and hour or part thereof		335.00 €

Special charges may be agreed for the uninterrupted handling of large consignments.

---



---

**35. PROVISION OF PERSONNEL**

---

within regular working hours per person (Mon-Fri 7.00 a.m.-4.00 p.m., Sat 7.00 a.m.-1.00 p.m.)	per man-hour	54.00 €
---	--------------	---------

---

OUTSIDE REGULAR WORKING HOURS, THE FOLLOWING EXTRA CHARGES APPLY

weekdays until 10.00 p.m.	per man-hour	27.00 €
on weekdays after 10.00 p.m., on Saturdays after 1.00 p.m. and Sundays and public holidays	per man-hour	54.00 €

---

OTHER REGULATIONS AND SURCHARGES

If the service and delivery does not immediately follow the regular working hours, a travel allowance of	per man-hour	85.00 €
waiting times	per man-hour	54.00 €
Man-hours outside the port tariff, if not mentioned		on request

---



---

**36. MANAGEMENT COSTS**

---

For services ordered from third parties on behalf of our client outside of this tariff, management costs amounting to 15 % of the order value per order will be charged.

---

# APPENDIX

---

---

## SUPPLEMENT TO THE SHIP WASTE DISPOSAL CHARGE

---

According to the State Ordinance on the Disposal of Ship Waste and Cargo Residues in the Ports of Schleswig-Holstein (Port Disposal Ordinance - HafEntsVO), the disposal of ship waste at the quay facilities managed by SEEHAFEN KIEL must always be handled by SEEHAFEN KIEL for ship waste pursuant to Annex IV (sewage from ships) and Annex V (garbage similar to household waste) of MARPOL 73/78, resulting from use of the ships by the crew and passengers.

Ships are to pay the following disposal charges per port call and GT for ship waste pursuant to MARPOL Annex I, IV and V unless an exemption pursuant to Section 13 or a reduction according to Section 7 HafEntsVO has been obtained from the Port Authority of the State Capital of Kiel, application and proof required.

---

On paying the disposal charges, the ship receives the right to waste disposal pursuant to this tariff.

---

The disposal charges include a proportionate disposal charge per category, amounting to 0.018 € per GT for oily fluids from operating the ship (MARPOL Annex 1) and of 0.001 € per GT for sewage from ships (MARPOL Annex IV).

Cruise ships are excluded from the reimbursement system for MARPOL Annex IV. For them, Chapter 20 "Ship waste water" does apply. The proportionate disposal charge covers the disposal of a maximum quantity whose disposal costs correspond to the calculated disposal charge. On presentation of an invoice for disposal of the fluids, SEEHAFEN KIEL refunds the itemised invoice amount of the waste disposal company. The refund will be paid at most up to the amount of the ascertained disposal charge. Any further disposal costs are to be paid separately by the shipping company, owner or charterer.

The disposal of ship waste pursuant to MAR-POL Annex 1 (oily fluids from operating the ship) can be handled by SEEHAFEN KIEL or contracted directly to a qualified waste disposal company pursuant to Section 26 Recycling and Waste Management Act.

It must be possible to pump ship waste from ship operations pursuant to MARPOL Annex I and IV out of the tanks at normal ambient temperature. The pumping capacity for ships up to a size of 499 GT must be at least 1 cbm/hour and at least 2 cbm/ hour for ships of more than 499 GT. International land connections must be available.

The ships will be provided with suitable port collection devices for the disposal of ship waste pursuant to MARPOL Annex V, apart from the disposal of particularly complex waste and waste needing special supervision pursuant to the Waste Directory Ordinance (AVV).

Disposal shall take place during the regular port working hours. The ship's management shall dispose of the ship wastes correctly in the provided containers according to the instructions issued by SEEHAFEN KIEL.

Ships are to pay the following disposal charges per port call and GT for ship waste pursuant to MARPOL Annex I, IV and V unless an exemption pursuant to Section 13 or a reduction according to Section 7 HafEntsVO has been obtained from the Port Authority of the State Capital of Kiel, application and proof required.

---

---

The ship disposal charge is reduced by 70 % for ships/vessels that have been completely exempt from the disposal obligation by the port authority pursuant to Section 7 HafEntsVO.

On request, SEEHAFEN KIEL can grant discounts for ships equipped with suitable technical installations for the separation and/or avoidance of waste.

---

---

#### SEPARATE DISPOSAL CHARGES

---

Attention is drawn to the fact that the disposal charges do not cover the disposal of particularly complex ship waste from the scope of MARPOL 73/78 Annex V such as light bulbs, fluorescent tubes, batteries, paint residues, oil and paint containers, oil filters, chemicals in containers, electrical devices, ash/soot, sewage residues of scrubber and sewage systems, fishing utensils and the disposal of waste needing special super-vision pursuant to the Waste Directory Ordinance (AVV). The costs for the disposal of this kind of waste must be paid directly by the shipping company, owner or charterer.

The disposal charges do not cover the disposal of cargo residues. The costs for the disposal of cargo residues are to be paid separately by the user of a collection device.

---

---

#### DISPOSAL OBLIGATION AND RESERVATION

---

The disposal obligation and provision of collection devices for ship waste applying to SEEHAFEN KIEL is subject to the registration period defined in Section 6 HafEntsVO.

SEEHAFEN KIEL can decide at its own discretion whether to demand an appropriate deposit from the ships.

The legal requirements for consistence and substances of grey- and black water according to the effective drainage statute of the State Capital City of Kiel must be respected.

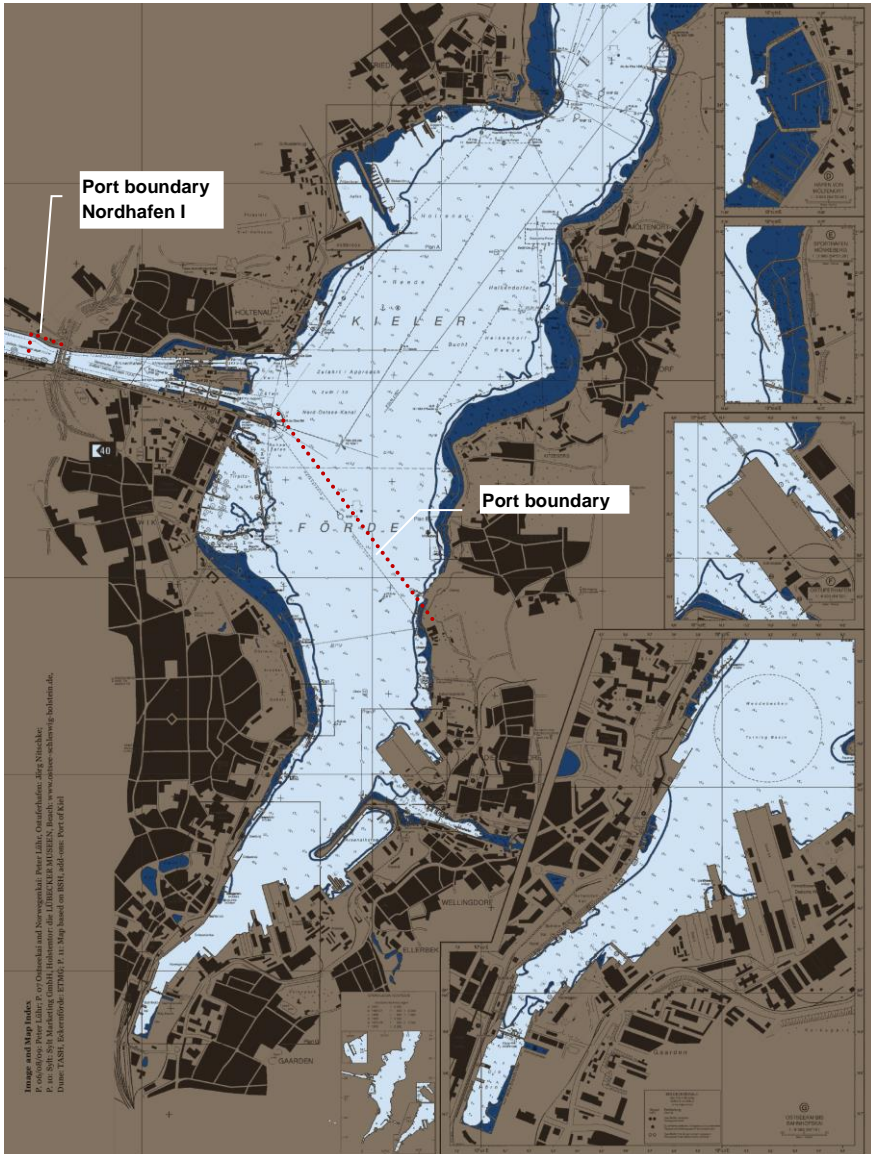
If any irregularities should occur, SEEHAFEN KIEL GmbH & Co. KG is entitled to deny the wastewater acceptance. SEEHAFEN KIEL GmbH & Co. KG hereby reserves the right to pass on the costs and damages to the polluter by means of damage notification.

---



# CHARGEABLE PORT AREA

---



# INCEPTION

---

This tariff shall apply from 1<sup>st</sup> January 2023.

In case of any divergence between the English and the German version of this tariff the German tariff shall prevail.

Kiel, 1<sup>st</sup> December 2022

SEEHAFEN KIEL GmbH & Co. KG

Dr. Dirk Claus  
Managing Director

# IMPRINT

---

**Publisher:**

SEEHAFEN KIEL GmbH & Co. KG

Schwedenkai 1  
24103 Kiel  
Germany

marketing@portofkiel.com  
+49 431 9822-0  
www.portofkiel.com

© 2022 PORT OF KIEL

# KIEL. GERMANY.

---

Welcome to our landing page:  
[www.portofkiel.com](http://www.portofkiel.com)

SEEHAFEN KIEL GmbH & Co. KG, Schwedenkai 1, 24103 Kiel, Germany  
T +49 431 9822-163, [hafenbetrieb@portofkiel.com](mailto:hafenbetrieb@portofkiel.com)