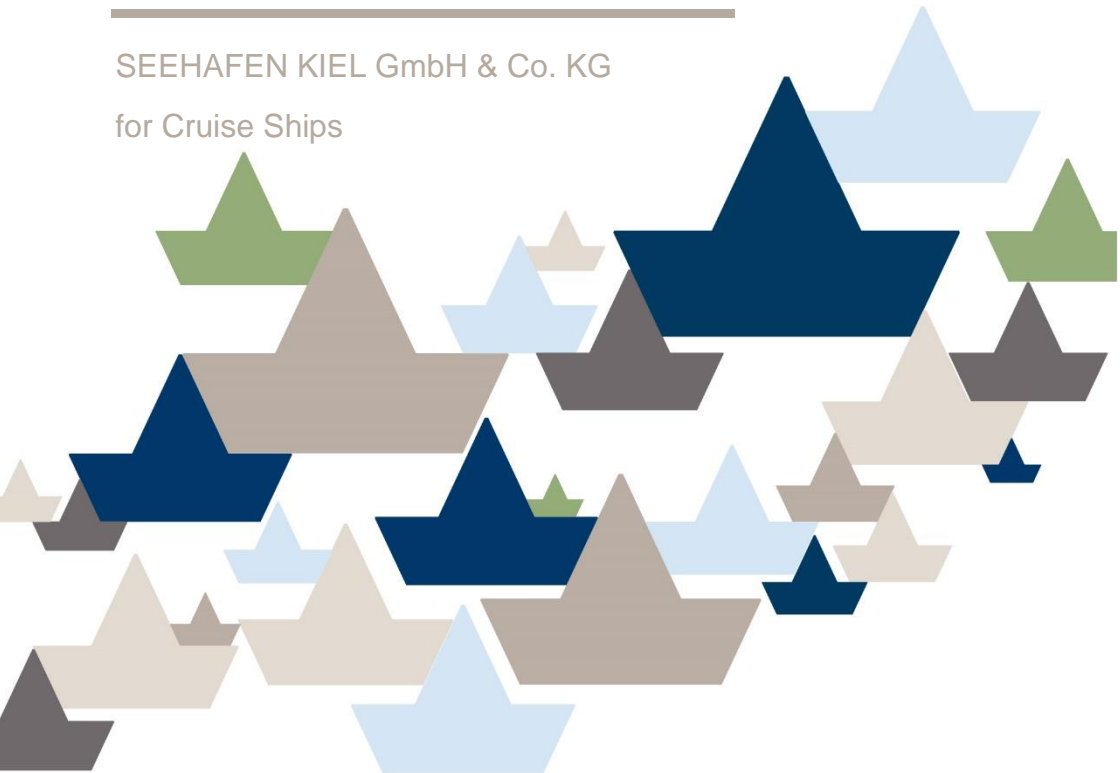




PORT OF KIEL

KIEL PORT AND QUAY TARIFF 2022

SEEHAFEN KIEL GmbH & Co. KG
for Cruise Ships





CONTENT

GENERAL	4	20. Storage under roof	10
1. Principle and scope of application	4	21. Provision of personnel	10
2. Parties liable.....	4	22. Management costs.....	10
3. Accrual of charges.....	4	APPENDIX	11
4. Obligation to notify.....	4	BANK DETAILS	13
5. Principles of assessment	5	NOTES	13
6. Security regulations according to International Ship and Port Security (ISPS)	5	CHARGEABLE PORT AREA	14
CRUISE SHIPS	6	INCEPTION	15
7. Port Charges	6	IMPRINT	15
8. Provisioning	6		
9. Terminal charge.....	7		
10. X-Ray in regular operation	7		
11. On-shore power	7		
12. Internet connection.....	7		
13. Berth reservation.....	8		
14. Ship wastewater	8		
15. Kitchen waste	8		
OTHER CHARGES	9		
16. Ship disposal charge.....	9		
17. Water charge (fresh water)	9		
18. Electricity charge.....	9		
19. Area charge.....	10		

You can also find the current and valid version of the tariff online. Enter the link or simply scan the QR code.



[HTTPS://WWW.PORTOFKIEL.COM/TARIFFS-GT.HTML](https://www.portofkiel.com/tariffs-gt.html)

GENERAL

1. Principle and scope of application

This tariff is based on the General Conditions for the Use of the Quay Facilities of the SEEHAFEN KIEL GmbH & Co. KG (PORT OF KIEL) in their current version which can be sent on request.

The contents of this tariff refer exclusively to cruise ships. The regulations and charges for cargo ships and other types of vessels are listed in a separate tariff.

The chargeable port area is determined in accordance with § 1.2 of the aforementioned General Conditions and is shown in the annex to this tariff.

Abbreviations used:

GT	= gross tonnage
t	= tonne
kW	= kilowatt
KWh	= kilowatt hour

2. Parties liable

Parties liable are the principals, users, consignees and owners of the cargo as well as the ship owners.

3. Accrual of charges

The claim to the fee arises with the use of the port and the utilisation of the service.

4. Obligation to notify

The principal (owner and driver) or agent (e.g. shipbroker) must immediately provide the data required for the calculation of charges and substantiate this by submitting clear documents (e.g. ship manifest, cargo and transport documents).

The corresponding notifications are preferably to be made via the Ship and Cargo Declaration System (SCD) of the PORT OF KIEL and the Kiel Port Authority.

However, the vehicle drivers and owners remain responsible for the complete and correct notification.

5. Principles of assessment

Sea-going ships and inland waterway vessels are charged according to gross tonnage (GT).

The port charges are calculated per port call. A port call is defined as one arrival and one departure. Started units of measurement are charged in full.

Cargo within the meaning of this tariff are all objects/items that are not loading units. Loading units are containers and trailers as well as vehicles of all kinds. Rollflats and cassettes are not loading units.

The rates of this tariff are net rates. In the case of services subject to turnover tax, VAT shall be added in accordance with the statutory provisions.

6. Security regulations according to International Ship and Port Security (ISPS)

Solely the PORT OF KIEL or a third party commissioned by it carries out security measures at its port facilities and terminals in accordance with the statutory requirements for port facility security and charges a security fee for this.

CRUISE SHIPS

7. PORT CHARGES

up to 59,999 GT per port call	per GT	0.48 €
from 60,000 GT per port call	per GT	0.35 €

THE FOLLOWING SURCHARGES AND DISCOUNTS ARE TAKEN INTO ACCOUNT

If several tariff discounts/surcharges apply, they shall be calculated on the respective intermediate result in the order indicated below.

PORT CALLS ON SATURDAYS + 10%

For port calls on Saturdays a surcharge will be added to the port charge.

ENVIRONMENTAL DISCOUNT - 20%

Cruise ships that are able to use on-shore power during the berthing period receive a discount. The prerequisite for this discount is proof of the ship's shore power capability (e.g. according to IEE/ISO/IEC 80005-1 standard) by an official certifier (e.g. TÜV Nord, Germanischer Lloyd, DNV or similar), so that an integration test can be carried out or the integration test in Kiel has already been completed. If operational processes on board or nautical/technical conditions do not allow the use of on-shore power, no discount will be granted.

DISCOUNT ON VOLUME - 10%

Cruise ships whose shipping company fleet reaches a GT volume per calendar year of more than 1 million GT receive a discount. The classification made for the calendar year applies from the 1st port call.

8. PROVISIONING

Quay charges per arrival and departure: For goods delivered by loading units (e.g. by truck or container) in the ISPS area.	per tonne	0.61 €
---	-----------	--------

9. TERMINAL CHARGE

A terminal charge is payable at the cruise terminals by the handling company operating on site.

This charge entitles the cargo handling company to use the areas/halls provided by the PORT OF KIEL for baggage handling and to use the quay area for baggage loading/unloading, handling of provisions and stores. The disposition of the open areas, quay facilities and halls is the responsibility of the PORT OF KIEL.

PER CRUISE CALL AND HANDLING

Up to 500 passengers	500.00 €
500 – 1,200 passengers	1,000.00 €
over 1,200 passengers	1,500.00 €

10. X-RAY IN REGULAR OPERATION

The following fees are charged for security services with X-ray screening equipment and operating personnel in accordance with the ISPS Code.

One set of equipment incl. staff for personal and hand luggage screening, incl. metal detector or for luggage screening per hour 260.00 €

The minimum continuous operating time per set of equipment is 4 hours.

Security measures at higher security levels than in normal operation caused by the ship will be carried out in accordance with the security plan and charged according to the actual expenditure incurred.

11. ON-SHORE POWER

The on-shore power plant at the Ostseekai offers cruise ships at berth 27 and berth 28 a shore power connection with 16 MVA (IEC standard 80005-1), which can be used to supply the ship with green electricity during its berthing time in the port of Kiel. In order to use the shore power system, the shipping company must conclude individual usage contracts with the PORT OF KIEL. If you are interested, please refer to your contact person at the PORT OF KIEL, who will then send you the corresponding draft contract. Separate charges per kWh are levied for on-shore power. No further costs are incurred for the use of on-shore electricity. Only one ship can be supplied at the Ostseekai at any one time. If two ships capable of using on-shore power are berthing at the Ostseekai, the ship with the higher power consumption will be supplied during the berthing period.

12. INTERNET CONNECTION

High-speed internet access for the ship can be provided on request at the Ostseekai during the ship's berthing time. The charge is based on the configuration of the network connection.

13. BERTH RESERVATION

The reservation of berths is made in consideration of the nautical-technical as well as safety-relevant requirements, the number of passengers to be disembarked and embarked and operational requirements, e.g. ISPS code. For these reasons, the PORT OF KIEL reserves the right to offer another suitable berth than the requested or confirmed berth, if necessary.

14. SHIP WASTEWATER

Disposal fee	per m ³	2.50 €
	up to 59,999 GT	300 m ³
Free quantity per port call for a ship with a size	from 60,000 GT	500 m ³

Should the realised disposal volume fall short of the included free quantity due to limited reception capacities at the berth, the unrealised difference to the free quantity can be credited.

Acceptance and disposal of grey and/or black water by means of tank truck/barge upon request

The specifications for quality and contents according to the valid drainage statutes of the State Capital City of Kiel must be adhered to. In case of irregularities, the PORT OF KIEL is entitled to prohibit the acceptance of the wastewater. The PORT OF KIEL hereby reserves the right to pass on any possible damages and costs to the polluter by way of a liability claim.

15. KITCHEN WASTE

Acceptance and disposal of kitchen waste upon request

OTHER CHARGES

16. SHIP DISPOSAL CHARGE

PER PORT CALL AND PER GT

For cruise ships with a passenger capacity of more than 12 passengers and a size of	up to 500 GT	0.120 €	max. 1.1 m ³
	from 501 GT	0.056 €	max. 5.0 m ³
	from 5,001 GT	0.046 €	max. 15.0 m ³
	from 20,001 GT	0.041 €	max. 20.0 m ³
	from 40,001 GT	0.035 €	max. 40.0 m ³
	from 75,001 GT	0.031 €	max. 60.0 m ³
	from 100,001 GT	0.026 €	max. 75.0 m ³

IF THE MAXIMUM QUANTITY IS EXCEEDED

per extra m³ 50.00 €

For further information, see the appendix starting on page 12. The maximum quantities indicated refer to ship-generated waste in accordance with Marpol Annex V. If the maximum quantity is exceeded, the disposal of the additional quantity will be charged separately.

17. WATER CHARGE (FRESH WATER)

A water charge is payable for the taking of drinking and boiler water directly at the quay facilities.

For a purchase of up to 100 t	per t	3.93 €
For each additional tonne		2.60 €
But at least		16.65 €

18. ELECTRICITY CHARGE

An electricity charge is payable for the use of electricity, which is calculated according to consumption. Special fees may be agreed with large consumers and permanent users.

per kWh	0.45 €
Connection fee per connection	24.75 €

19. AREA CHARGE

For the use of quay areas for which ship demurrage fees are not already payable under this tariff or for which a rental or lease agreement has been concluded, an area charge shall be payable. The area fee shall be agreed per m² or per t or m³.

The use of quay areas requires the prior consent of the PORT OF KIEL, which in particular determines the size and location of the area and assesses the area used by its own measurements. Even after consent has been granted, the PORT OF KIEL is entitled at any time to prohibit the use of the quay area for reasons of port operation and to demand that the area be vacated within a period of at least 24 hours. Any fees paid in advance will be refunded.

20. STORAGE UNDER ROOF

Special fees are agreed for storage under roof.

21. PROVISION OF PERSONNEL

WITHIN REGULAR WORKING HOURS PER PERSON

Mon-Fri 7.00 a.m.-4.00 p.m., Sat 7.00 a.m.-1.00 p.m.	per man-hour	49.50 €
--	--------------	---------

OUTSIDE REGULAR WORKING HOURS, THE FOLLOWING EXTRA CHARGES APPLY

Weekdays until 10.00 p.m.	per man-hour	20.40 €
---------------------------	--------------	---------

On weekdays after 10.00 p.m., on Saturdays after 1.00 p.m. and Sundays and public holidays	per man-hour	49.50 €
--	--------------	---------

OTHER REGULATIONS AND SURCHARGES

If the service and delivery does not immediately follow the regular working hours, a travel allowance of	per man-hour	80.60 €
--	--------------	---------

Waiting times	per man-hour	49.50 €
---------------	--------------	---------

Man-hours outside the port tariff, if not mentioned		upon request
---	--	--------------

22. MANAGEMENT COSTS

For services ordered from third parties on behalf of our client outside of this tariff, management costs amounting to 15 % of the order value per order will be charged.

APPENDIX

SUPPLEMENT TO THE SHIP WASTE DISPOSAL CHARGE

According to the State Ordinance on the Disposal of Ship Waste and Cargo Residues in the Ports of Schleswig-Holstein (Port Disposal Ordinance - HafEntsVO), the disposal of ship waste at the quay facilities managed by the PORT OF KIEL must always be handled by the PORT OF KIEL for ship waste pursuant to Annex IV (sewage from ships) and Annex V (solid garbage similar to household waste) of the MARPOL agreement, resulting from use of the ships by the crew and passengers.

Unless a reduction according to § 7 HafEntsVO has been granted by the Port Authority of the State Capital City of Kiel upon application and proof and which is provided at least 24 hours prior to the ship's arrival, a disposal fee for ship waste according to MARPOL Annex I, IV and V is to be paid for vehicles per call and GT.

On paying the disposal charges, the ship receives the right to waste disposal pursuant to this tariff.

The disposal charge includes a proportional disposal charge for the category for oily liquids from ship operation (MARPOL Annex I) in the amount of 0.018 €/GT. The proportional disposal charge covers the disposal up to a maximum quantity, the disposal costs of which correspond to the calculated disposal charge. On presentation of an invoice for the disposal of the oil-containing liquids, the PORT OF KIEL will reimburse the amount shown on the invoice of the specialist disposal company. Reimbursement shall be made at most to the amount of the disposal charge determined. Any disposal costs exceeding this amount shall be borne separately by the ship-owner, owner or charterer.

The waste must be disposed of within the normal working hours of the port. The ship's command must properly dispose of the ship's waste in the containers provided on the instructions of the PORT OF KIEL.

For ships/vehicles that are fully exempted by the Port Authority from the obligation to dispose of waste in accordance with § 7 HafEntsVO, the ship disposal charge is reduced by 70 %.

Upon request, the PORT OF KIEL may grant reductions for vehicles which have suitable technical equipment for the separation and/or avoidance of waste.

SEPARATE DISPOSAL CHARGES

The disposal of particularly complex ship-generated waste in accordance with Annex V and the disposal of waste requiring special supervision in accordance with the Waste Catalogue Ordinance (AVV) are not included in the disposal charge. The costs for the disposal of these wastes are to be borne by the ship-owner, owner or charterer.

The disposal of cargo residues is not included in the disposal charge. The costs for the disposal of cargo residues shall be borne separately by the user of a reception facility.

DISPOSAL OBLIGATION AND RESERVATION

The obligation to dispose of and provide reception facilities for ship-generated waste exists for the PORT OF KIEL subject to the reporting deadline regulation according to § 6 of the HafEntsVO.

The PORT OF KIEL may, at its discretion, require vessels to pay an appropriate security deposit.

CHARGEABLE PORT AREA

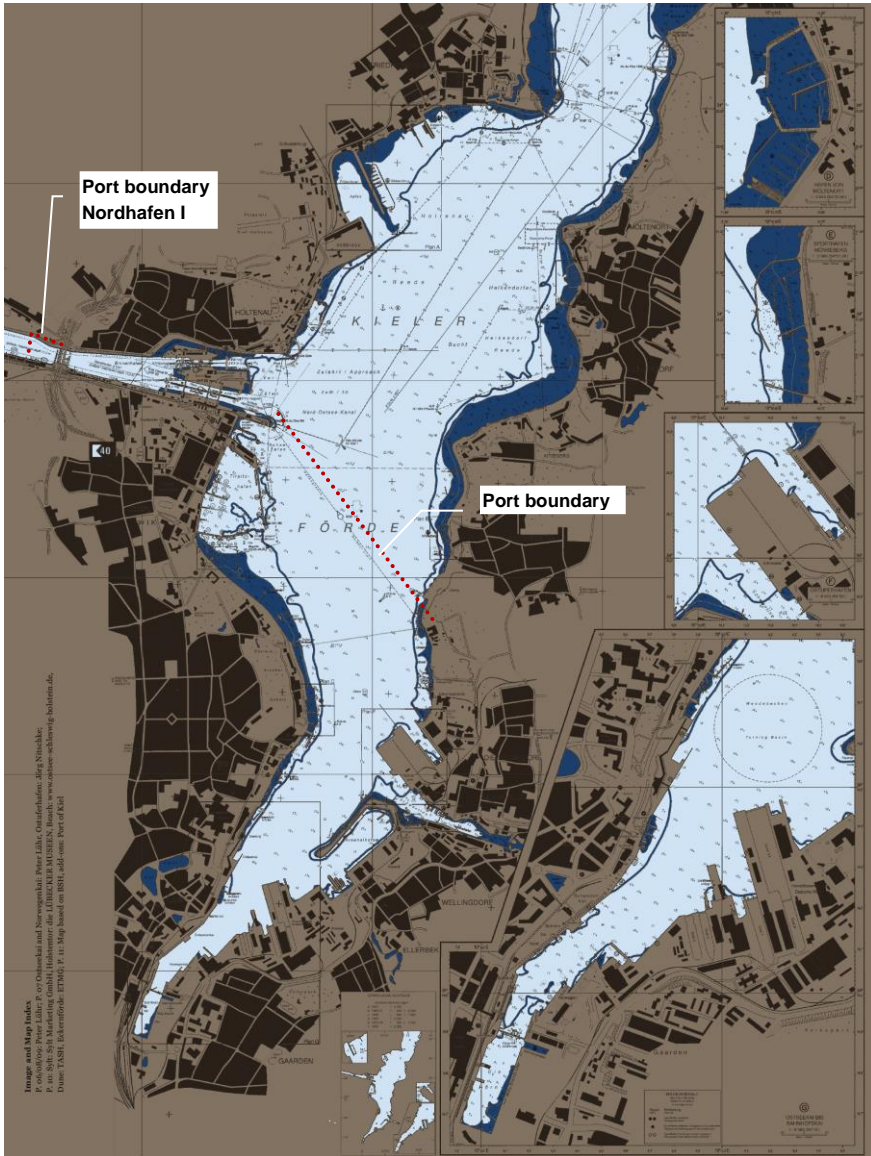


Image and Map Index:
Produced by Peter Lüthje, P. Lüthje & Partner, Hamburg, Germany.
Data: IASH, Hydrographic Institute, P. Lüthje & Partner, Hamburg, Germany.
© 2022 IASH, Hydrographic Institute, P. Lüthje & Partner, Hamburg, Germany.

INCEPTION

This tariff shall apply from 1st January 2022.

In case of any divergence between the English and the German version of this tariff the German tariff shall prevail.

Kiel, 15th December 2021

SEEHAFEN KIEL GmbH & Co. KG

Dr. Dirk Claus
Managing Director

IMPRINT

Publisher:

SEEHAFEN KIEL GmbH & Co. KG

Schwedenkai 1
24103 Kiel
Germany

marketing@portofkiel.com
+49 431 9822-0
www.portofkiel.com

Errors and omissions excepted.

© 2021 PORT OF KIEL

KIEL. GERMANY.

Welcome to our landing page:
www.portofkiel.com