



PORT OF KIEL

KIEL PORT AND QUAY TARIFF

valid from January 2019

CONTENT

GENERAL	4	INLAND NAVIGATION VESSELS	15
1. Principle and scope	4	32. Port charges	15
2. Parties liable.....	4	33. Quay charges.....	15
3. Accrual of charges.....	4	TUGS, ICEBREAKERS	16
4. Notification duty.....	4	34. Port charges	16
5. Principles of assessment.....	4	TANKERS.....	17
6. General exemptions.....	5	35. Port charges	17
7. Exemptions/reductions	5	36. Quay charges	17
8. Security regulations pursuant to ISPS	5	37. Security charges.....	17
9. Conversion principles	6	OTHER VEHICLES.....	18
FERRIES	7	38. Port charges.....	18
10. Port charges	7	39. Quay charges	19
11. Quay charges.....	7	40. Security charges	19
12. Gate charges	8	OTHER CHARGES.....	20
13. Security charges	8	41. Annual port charges.....	20
CRUISE SHIPS.....	9	42. Ship waste disposal charges	20
14. Port charges.....	9	43. Water charges (fresh water).....	22
15. Quay charges	9	44. Electricity charges	22
16. Security charges	9	45. Storage charges.....	22
17. Port calls on weekdays, Mondays to Fridays .	9	46. Surface charges.....	23
18. Terminal user charges.....	9	47. Crane charges	23
19. X-Ray.....	10	48. Provision of labour	23
20. Internet access.....	10	49. Overhead cost	24
21. Berth reservation.....	10	FINAL RULES AND CONDITIONS.....	25
22. Vessel waste water	10	LIST OF CARGO CATEGORIES	25
23. Kitchen waste.....	10	DOWNLOAD.....	25
CONVENTIONAL CARGO SHIPS.....	11	BANK DETAILS.....	25
24. Port charges	11	COMMENCEMENT.....	25
25. Quay charges.....	11	ANNEX TO KIEL PORT AND QUAY TARIFF..	26
26. Gate charges.....	12		
27. Security charges	12		
CONTAINER SHIPS.....	13		
28. Port charges	13		
29. Quay charges.....	13		
30. Gate charges	13		
31. Security charges	14		

GENERAL

1. Principle and scope

This tariff is based on the General Conditions for the Use of the Quays of SEEHAFEN KIEL GmbH & Co. KG (SEEHAFEN KIEL) as amended, which can gladly be provided on request. The area of the port subject to charges is defined pursuant to Section 1.2 of the above mentioned General Conditions and is shown in the Annex to this tariff.

2. Parties liable

Parties liable to pay port and quay charges are principals, users, consignees and owners of goods and shipping companies.

3. Accrual of charges

Charges are incurred on using the port and with utilisation of the service.

The annual port fee and other charges paid for a legal year or other periods of time still have to be paid for the full accounting period if the payment obligation starts or ends in the course of this period. Charges for single trips or provisional use are not imputed to charges to be paid for certain periods.

4. Notification duty

The principal (owner and operator) or contractor (e.g. shipping agent) shall report the data necessary for calculation of the charges straight away with suitable verification in the form of unambiguous documents (e.g. ship/loading/freight carriage papers). Responsibility for full and correct notification still remains with the operators and owners.

Special notification duties apply to the owners of vessels paying an annual port fee. Please see other charges from page 20.

5. Principles of assessment

Ocean-going vessels are charged according to gross tonnage (GT). In the case of a double tonnage certificate, the largest measurement applies. The reduced gross tonnage for open container ships is not taken into consideration.

Barges, except inland tankers, are charged according to the maximum load rating (calibrated tonnage).

Port fees are charged per port call. A port call is defined as one arrival and one departure.

Tugs, icebreakers and rescue vessels are charged according to their engine power (kW).

For vessels without own propulsion the assessment basis consists of the surface area obtained by multiplying the largest length by the largest width of the vessel calculated as square metres. The length is rounded up to full metres and the width to half metres.

Started assessment units are charged to the full.

The usage of berths that has not already been paid according to this tariff will be subject to special agreements.

Cargo is categorised into classes according to the List of Goods Categories (see tariff annex). Charges are agreed separately for cargo not featured in the List of Goods Categories.

The charge rates of this tariff are net rates. Statutory value added tax is added to services liable to value added tax.

6. General exemptions

The following are exempt from payment of port fees, ship demurrage and minimum use charges under this tariff:

- vessels of the German armed forces
- vessels executing sovereign tasks or research tasks of the federal government, the state or the state capital of Kiel
- pilot boats, fire-fighting boats and lifeboats when used for their intended purpose
- foreign government vessels flying their state flag and used only for state purposes; subject to mutual arrangements
- dinghies and launches liable to or exempt from charges under this tariff when used for their intended purpose and not requiring a permanent berth
- boats only used for rowing
- training ships (apart from pleasure crafts) used only for training purposes
- recreational crafts up to a length of 15 m temporarily passing through the port area (visitors) to reach facilities not owned by SEEHAFEN KIEL
- Guest ships of the Museumshafen Kiel e.V. at the Germaniahafen without commercial passenger trips with a rating of up to 60 GT for up to maximum 48 hours.

7. Exemptions/reductions

Further to the general exemptions, the following are exempt from port charges - notwithstanding the charging of ship demurrage fees and minimum use charges:

- ships and other vessels using the port area for a period of 24 hours without loading or unloading
- inland waterway ships loading or unloading general cargo in cargo categories I, II or III intended for a seaward sailing ocean-going vessel or delivered with a seaward port-entering ocean-going vessel

- disabled vessels using the port as emergency port
- tugs towing a vessel using the port area for a period of 24 hours without loading or unloading
- vessels built in Kiel going out empty for the first time (including test runs)
- vessels leaving a facility in the port area in order to unload or load at another facility within the port area when the higher port charge has already been paid
- lighter vessels used for lighterage of ships moored in the port area

Ocean-going ships certified according to the Environmental Ship Index with more than 30 ESI points (www.environmentalshipindex.org) are granted a discount of 5 % on the port charge upon presentation of a currently valid certificate.

8. Security regulations pursuant to ISPS

Measures to avert danger according to the statutory requirements for port facility security are carried out only by SEEHAFEN KIEL or a third party instructed accordingly by SEEHAFEN KIEL, with a corresponding security charge being levied accordingly.

The security charge is to be paid for use of the facilities by ships exceeding 500 GT, ferries coming under the ISPS code or mobile offshore systems.

Ships used on fixed routes in short-distance sea transport can be exempt from payment of the security charge if a bilateral or multilateral agreement on deviating precautions exists between the Federal Republic of Germany and the respective port countries and a Permanent Declaration of Security (PDOS) has been submitted.

The security charge is levied for inbound and outbound sea transport (security level 1).

9. Conversion principles

If precise weight specifications are not available when handling wood, the charges are calculated using the following basis:

1. Pinewood logs: scm = 0.45 t
2. Hardwood logs: scm = 0.60 t
3. Sawn timber: cm³ = 0.56 t

FERRIES

including RoRo ships, RoPax ships, and ConRo ships

10. Port charges

THE PORT CHARGES AMOUNTS TO		
per port call	per GT	0.16 €
or in year-round regular liner service		
per port call	per GT	0.12 €

Ship demurrage fees

In addition to port charges demurrage fees are to be paid for ferries moored for more than two days in the port, charged from 0:00 hrs on the third day. Demurrage fees are not to be paid between loading and unloading.

SHIP DEMURRAGE FEES ARE AS FOLLOWS

for every started 7 day period	per GT	0.22 €
from the 8 th day or without loading/ unloading	per GT	0.44 €

Vessels not using a handling berth during the demurrage time, only pay one quarter of the ship demurrage fees.

11. Quay charges

Quay charges are to be paid for using the quay facilities when handling ships. Quay charge is levied on cargo, shipping units plus their load and passengers. Quay charges are also levied for loading and unloading when handling directly from ship to ship.

QUAY CHARGES ARE AS FOLLOWS

for shipping units per arrival and per departure

Units with a length of up to 6 m per unit	4.22 €
more than 6 m to 8 m	8.66 €
more than 8 m to 12.5 m	9.10 €
more than 12.5 m to 16 m	11.37 €
more than 16 m to 19.0 m	16.09 €
more than 19.0 m to 26.0 m	20.64 €
more than 26 m	25.18 €

Quay charges for containers handled by crane (LoLo): see chapter 29.

Cars/trucks (new vehicles) up to 8 m length being imported or exported are given a discount of 40 % per unit.

The following deductions apply to units exceeding 6 m in length in a regular liner service:

If the following transshipment quantities are exceeded per service in a legal year, every further unit is given a discount as follows:

TOTAL UNITS	DISCOUNT
10,001 - 17,500	5 %
17,501 - 22,500	10 %
22,501 - 30,000	20 %
30,001 - 40,000	40 %
more than 40,000	50 %

Containers on (roll) flats or chassis count as one unit.

A 50 % discount on the quay charge is granted for empty containers (RoRo).

QUAY CHARGES ARE AS FOLLOWS

for cargo and vehicle loads per arrival and per departure:		
Cargo category II	per t	0.60 €
Cargo category III	per t	1.05 €
Cargo category IV	per t	4.55 €
Quay charge for one arrival and departure in total at least		26.00 €
for passengers per arrival and departure:		
- when using the passenger terminals per person		1.38 €
- when using through other facilities per person		1.01 €

12. Gate charges

A gate charge is levied at terminals or part of the port facilities which are cordoned off and secured at entrance and exit through dedicated gates. Gate charge is to be paid for vehicles above 6 m length and for transport equipment units a length of 20' or more (e.g. trailers, containers, etc.) that arrive or depart on ships.

GATE CHARGE

per cargo unit per arrival or departure	9.05 €
--	--------

13. Security charges

The security charge is levied for cargo/passengers in sea transport.

SECURITY CHARGE AMOUNTS

to the following for regular service (security level 1), per arrival and per departure:

per passenger	0.75 €
---------------	--------

for containers and shipping units exceeding 6 m in length per shipping unit	0.55 €
but at least per demurrage day	300.00 €

Ships that neither load nor unload are charged according to workload and material input.

When a gate charge is levied for shipping units, payment of the security charge is covered by payment of the gate charge.

Payment of the security charge for passengers also covers the security charge for the passengers' vehicles.

CRUISE SHIPS

The charge is assessed for each shipping company per year. The categorisation made every calendar year becomes effective from the first call.

14. Port charges

PORT CHARGE

per call per GT	0.35 €
more than 250,000 - 500,000 GT p.a. per call/per GT	0.27 €
more than 500,000 - 1 million GT p.a. per call/per GT	0.19 €
more than 1 million - 2 million GT p.a. per call/per GT	0.18 €
more than 2 million - 3.5 million GT p.a. per call/per GT	0.16 €
more than 3.5 million GT p.a. per call/per GT	0.15 €

15. Quay charges

Quay charges are levied for passengers and trucks for the use of the quay and terminal facilities.

QUAY CHARGE

per passenger	2.55 €
more than 20,000 - 50,000 passengers p.a. per passenger	2.20 €
more than 50,000 - 100,000 passengers p.a. per passenger	1.50 €
more than 100,000 - 150,000 passengers p.a. per passenger	1.00 €
more than 150,000 passengers p.a. per passenger	0.60 €

Quay charge for truck deliveries into the ISPS zone (provisions, parts, etc.)

per t cargo 0.60 €

16. Security charges

The security charge is levied for sea traffic.

SECURITY CHARGE

for regular service (security level 1)
per passenger 1.00 €

17. Port calls on weekdays, Mondays to Fridays

Special charges can be agreed for cruise ships for port calls on weekdays, Mondays to Fridays.

18. Terminal user charges

Companies working at the cruise terminals are supposed to pay a terminal user charge.

This charge authorises the company to use the areas and facilities provided by SEEHAFEN KIEL GmbH & Co. KG for baggage-handling and to use the quay areas for loading/unloading of baggage, for the handling of supplies and stores. The disposition of laydown areas, warehouses and the entire wharfage is incumbent upon SEEHAFEN KIEL GmbH & Co. KG.

TERMINAL USER CHARGE

per call and handling	
up to 500 passengers	500.00 €
from 500 - 1,200 passengers	1,000.00 €
more than 1,200 passengers	1,500.00 €

19. X-Ray

The following charge is levied for security services with X-ray scanning devices and operating staff pursuant to the ISPS code:

One set of equipment including staff in each case for checking passengers and hand baggage including metal detector or for checking luggage	
per hour	260.00 €

The minimum uninterrupted deployment time per set of equipment is 4 hours.

Measures for averting danger in security levels higher than the regular service which are caused by the ship are carried out according to the danger plan and charged according to the actually incurred expenditure.

20. Internet access

While the ship berths at Ostseekai, high-speed Internet access can be made available on request.

The charge depends on the configuration of the network access.

21. Berth reservation

Berths shall be reserved according to the nautical/technical and security-relevant requirements, the number of passengers embarking and disembarking and operational necessities such as the ISPS code for example. For these reasons, SEE-HAFEN KIEL GmbH & Co. KG reserves the right to offer another, suitable berth similar to the requested or confirmed berth, if necessary.

22. Vessel waste water

THE VESSEL WASTE WATER DISPOSAL FEE IS

Disposal fee	2.50 €/m ³
--------------	-----------------------

AS SOON AS THE NEW FACILITY IS IN OPERATION

Acceptance and disposal of grey and/or black water

Exempt amount/per call	
Vessel up to 60,000 GT:	300 m ³
Vessel from 60,001 GT:	500 m ³

Should the actual disposal volume undercut the above mentioned exempt amount due to limited acceptance capacities at the berth, the difference can be credited.

Acceptance and disposal of grey and/or black water by tanker/barge	on request
--	------------

The limiting values for consistence and substance according to the effective drainage statute of the capital city of Kiel must be respected.

23. Kitchen waste

Acceptance and disposal of kitchen waste	on request
--	------------

CONVENTIONAL CARGO SHIPS

24. Port charges

THE PORT CHARGES AMOUNTS TO

per port call	per GT	0.37 €
In year-round regular service		
per port call	per GT	0.27 €

Minimum charge

A minimum usage charge is levied on vessels whose weight or volume of the cargo handled in the Port of Kiel is less than one third of their load rating or hold capacity.

MINIMUM CHARGE

per port call	per GT	0.12 €
but at least		26.00 €
per port call		

Ship demurrage fees

In addition to port charges or minimum charge demurrage fees are to be paid for ships moored for more than two days in the port, charged from 0.00 h on the third day. Demurrage fees are not to be paid between loading and unloading.

SHIP DEMURRAGE FEES

for every started 7 period	per GT	0.22 €
from the 8 th day or without loading/unloading	per GT	0.44 €

Vessels not using a transshipment berth during the demurrage time only pay one quarter of the ship demurrage fees.

25. Quay charges

Quay charges are to be paid for using the quay facilities when handling ships with cargo. Quay charges are also levied for loading and unloading when handling directly from ship to ship.

QUAY CHARGES

for cargo
per arrival and per departure:

Cargo category I	per t	0.38 €
Cargo category II	per t	0.60 €
Cargo category III	per t	1.05 €
Cargo category IV	per t	4.55 €

But for both arrival and departure together at least	26.00 €
--	---------

(Special conditions apply to mass bulk goods in goods category IV).

Quay charges for containers handled by crane (LoLo): see chapter 29.

26. Gate charges

A gate charge is levied at terminals or part of the port facilities which are cordoned off and secured at entrance and exit through dedicated gates. Gate charge is to be paid for vehicles above 6 m length and for transport equipment units a length of 20' or more (e.g. trailers, containers, etc.) that arrive or depart on ships.

GATE CHARGE AMOUNTS FOR	
for facilities secured by SEEHAFEN KIEL	
per unit, per arrival or departure	9.05 €

27. Security charges

The security charge is levied for cargo/passengers in sea transport.

SECURITY CHARGE AMOUNTS	
to the following for regular service (security level 1), per arrival and per departure:	
per passenger	0.75 €
for containers and shipping units exceeding 6 m in length per shipping unit	0.55 €
but at least	300.00 €

Ships that neither load nor unload are charged according to expenditure and material input.

When a gate charge is levied for shipping units, payment of the security charge is covered by payment of the gate charge.

CONTAINER SHIPS

28. Port charges

PORT CHARGES AMOUNT TO

per port call	per GT	0.24 €
In year-round regular service		
per port call	per GT	0.16 €

Minimum charge

A minimum usage charge is levied on vessels whose weight or volume of the cargo handled in the Port of Kiel is less than one third of their load rating or hold capacity.

MINIMUM USAGE FEE

per port call	per GT	0.12 €
but at least		26.00 €
per port call		

Ship demurrage fees

In addition to port charges or minimum charge demurrage fees are to be paid for container ships moored for more than two days in the port, charged from 0:00 hrs on the third day. Demurrage fees are not to be paid between loading and unloading.

SHIP DEMURRAGE FEE

for every started 7	per GT	0.22 €
period		
from the 8 th day or		
without loading/ unloading	per GT	0.44 €

Vessels not using a transshipment berth during the demurrage time only pay one quarter of the ship demurrage fees.

29. Quay charges

Quay charges are to be paid for using the quay facilities when handling ships with containers. Quay charge is also levied for loading and unloading when handling directly from ship to ship.

QUAY CHARGE

for loaded containers		
per arrival and per departure	per TEU	16.65 €

The cargo weight is not charged separately and is covered with the quay charge for the unit load.

Empty containers	per TEU	4.44 €
Surcharge for IMDG/dangerous goods	per TEU	11.64 €

30. Gate charges

A gate charge is levied at terminals or part of the port facilities which are cordoned off and secured at entrance and exit through dedicated gates.

GATE CHARGE AMOUNTS TO

for facilities secured by SEEHAFEN KIEL		
per unit, per arrival or departure		9.05 €

31. Security charges

The security charge is levied for cargo in sea transport.

SECURITY CHARGES AMOUNT TO

the following for regular service (security level 1),
per arrival and per departure:

For containers and shipping units exceeding 6 m in length per shipping unit	0.55 €
---	--------

but at least	300.00 €
--------------	----------

Ships that neither load nor unload are charged according to expenditure and material input.

When a gate charge is levied for shipping units, payment of the security charge is covered by payment of the gate charge.

INLAND NAVIGATION VESSELS

32. Port charges

PORT CHARGES AMOUNT TO

per port call	0.40 €
per calibrated tonne	

Minimum charge

A minimum usage charge is to be paid for vessels whose weight or volume of the cargo handled in the Port of Kiel is less than one third of their load rating or hold capacity.

MINIMUM CHARGE

per port call	
per calibrated tonne	0.12 €
but at least	12.50 €
per port call	

Ship demurrage fees

In addition to port charges or minimum charge demurrage fees are to be paid for vehicles moored for more than seven days in the port, charged from 0.00 hrs on the eighth day. Demurrage fees are not to be paid between loading and unloading.

DEMURRAGE FEES

from the 8 th day	
per every 7 days or part thereof	
per calibrated tonne	0.31 €

33. Quay charges

Quay charges are to be paid for using the quay facilities when handling ships with cargo. Quay charges are also levied for loading and unloading when handling directly from ship to ship.

For container handling, the stipulations of chapters 29 and 30 apply.

Tankers to bunker ships are exempt from payment of wharfage.

QUAY CHARGE

per arrival and per departure for:

Cargo category I	per t	0.38 €
Cargo category II	per t	0.60 €
Cargo category III	per t	1.05 €
Cargo category IV	per t	4.55 €

Passengers		
- on a boat trip		1.38 €
per passenger		
- on a cruise		
per passenger		2.55 €

But for both arrival and departure together at least	26.00 €
--	---------

Inland navigation vessel cargo is exempt from wharfage charges

- for cargo in goods categories I, II or III intended for an outbound vessel or delivered with an inbound vessel
- if quay charges have already been paid in the port of Kiel for the same cargo.

TUGS, ICEBREAKERS

34. Port charges

PORT CHARGES AMOUNT TO

per port call/per kW	0.29 €
----------------------	--------

Minimum charge

MINIMUM CHARGE

per port call/per kW	0.12 €
but at least per port call	25.00 €

Ship demurrage fees

In addition to port charges or minimum charge demurrage fees are to be paid for ships moored for more than two days in the port and for which no annual port fees are levied pursuant to chapter 41, charged from 0.00 h on the third day. Demurrage fees are not to be paid between loading and unloading.

SHIP DEMURRAGE FEE

for every started 7 day period	per kW	0.22 €
from the 8 th day	per kW	0.44 €

Vessels not using a transshipment berth during the demurrage time only pay one quarter of the ship demurrage fees.

TANKERS

e.g. inland, gas and chemical tankers

35. Port charges

PORT CHARGES AMOUNT TO

per port call/per GT	0.66 €
----------------------	--------

Minimum charge

A minimum usage charge is to be paid for vessels whose weight or volume of the cargo handled in the Port of Kiel is less than one third of their load rating or hold capacity.

MINIMUM CHARGE

per port call/per GT	0.12 €
but at least per port call	26.00 €

Ship demurrage fees

In addition to port charges or minimum charge demurrage fees are to be paid for tankers moored for more than two days in the port, charged from 0:00 hrs on the third day. Demurrage fees are not to be paid between loading and unloading.

SHIP DEMURRAGE FEE

for every started 7 day period	per GT	0.22 €
from the 8 th day or without loading/unloading	per GT	0.44 €

Vessels not using a transshipment berth during the demurrage time only pay one quarter of the ship demurrage fees.

For double-hull tankers, the volume of the double hull is not taken into account if stated separately in the tonnage certificate.

36. Quay charges

Quay charges are to be paid for using the quay facilities when handling ships with cargo. Tankers to bunker ships are exempt from payment of wharfage.

QUAY CHARGES

Goods category II	per t	0.60 €
Goods category IV	per t	4.55 €

37. Security charges

The security charge is levied for inbound and outbound sea transport.

SECURITY CHARGE AMOUNTS TO

for normal operations (security level 1): per started day of stay	300.00 €
---	----------

Ships that neither load nor unload are charged according to expenditure and material input.

OTHER VEHICLES

such as excursion boats, passenger boats not in regular service, pontoons, salvage and off-shore vessels, recreational crafts, motor yachts and sailing boats (longer than 15 m) etc.

38. Port charges

PORT CHARGES AMOUNT TO

per port call	per GT	0.45 €
per m ² surface area		1.17 €

For recreational craft and sailing boats (up to 15 m length) temporarily using the facilities of SEEHAFEN KIEL (visitors), the fees for a mooring area for a demurrage time of more than 2 hours

including VAT	per day	26.00 €
---------------	---------	---------

Minimum charge

A minimum usage charge is to be paid for vessels whose weight or volume of the cargo handled in the Port of Kiel is less than one third of their load rating or hold capacity.

MINIMUM CHARGE

per port call/per GT	0.12 €
but at least per port call	26.00 €

Ship demurrage fees

In addition to port charges or minimum charge demurrage fees are to be paid for ships/vehicles moored for more than two days in the port and for which no annual port fees are levied pursuant to chapter 41, charged from 0.00 h on the third day. Demurrage fees are not to be paid between loading and unloading.

SHIP DEMURRAGE FEE

for every started 7 days period	per GT	0.22 €
---------------------------------	--------	--------

from the 8 th day or without loading/unloading	per GT	0.44 €
---	--------	--------

for other vessels mooring for more than 2 days, per started 30-day period of the additional demurrage time.

per m ² surface area	2.11 €
---------------------------------	--------

39. Quay charges

Quay charges are to be paid for using the quay facilities when handling ships with cargo and/or with passengers on boat trips. Quay charges are also levied for loading and unloading when handling directly from ship to ship.

QUAY CHARGES

per arrival and departure:

Goods category I	per t	0.38 €
Goods category II	per t	0.60 €

Passengers on a boat trip		
per arrival and departure		1.38 €
per passenger		

But for both arrival and departure together at least		26.00 €
--	--	---------

40. Security charges

The security charge is levied for inbound and outbound sea transport.

SECURITY CHARGE AMOUNTS TO

for regular operation (security level 1):

for each passenger	0.75 €
but at least	300.00 €

Ships that neither load nor unload are charged according to expenditure and material input.

OTHER CHARGES

41. Annual port charges

Annual port fees can be levied annually on request; ship owners should comply with the following:

- Annual registration of the vessels by 15th January of each year, stating all necessary details for calculating the charges;
- Registration within 2 working days for vessels that will start operating or be withdrawn from operations during the course of the year;
- Immediate notification of a change in the intended purpose or ownership situation of the vessels.

ANNUAL PORT CHARGE

for ships carrying passengers across the Kiel Fjord as part of regular scheduled local public transport and for passenger ships performing regular boat trips and harbour tours on the Kiel Fjord for an uninterrupted period of at least 3 months within a year.

for every person stated in the official permission to carry passengers	14.58 €
per year	
but at least	610.00 €

If these vessels pay annual port fees, cross the sea border (the connecting line between lighthouse “Büllk” and Laboe Naval Memorial) and also call at other ports, accept maintenance and repairs, these journeys and wharfages are to be announced immediately. They will be charged separately.

per GT/trip	0.25 €
-------------	--------

ANNUAL PORT CHARGE FOR OTHERS

freighters that carry cargo only on the Kiel Fjord up to the sea border	4.09 €
per GT/p.a.	
for tugs, icebreakers and salvage vessels	2.60 €
per kW/ p.a.	
for other vessels	4.22 €
per m ² surface area/p.a.	

42. Ship waste disposal charges

According to the State Ordinance on the Disposal of Ship Waste and Cargo Residues in the Ports of Schleswig-Holstein (Port Disposal Ordinance - HafEntsVO), the disposal of ship waste at the quay facilities managed by SEEHAFEN KIEL must always be handled by SEEHAFEN KIEL for ship waste pursuant to Annex IV (sewage from ships) and Annex V (garbage similar to household waste) of MARPOL 73/78, resulting from use of the ships by the crew and passengers.

The disposal of ship waste pursuant to MARPOL Annex 1 (oily fluids from operating the ship) can be handled by SEEHAFEN KIEL or contracted directly to a qualified waste disposal company pursuant to Section 26 Recycling and Waste Management Act.

Vessels are to pay the following disposal charges per port call and GT for ship waste pursuant to MARPOL Annex I, IV and V unless an exemption pursuant to Section 13 or a reduction according to Section 7 HafEntsVO has been obtained from the Port Authority of the State Capital of Kiel, application and proof required:

Disposal charges

VESSEL TYPE	VESSEL-SIZE [GT]	DISPOSAL CHARGES [EURO/GT]	MAX. AMOUNT OF SHIP WASTE AS PER MARPOL ANNEX V
Ships with capacity over 12 passengers	up to 500	0.11	1.1 m ³
	501 - 5,000	0.055	5.0 m ³
	5,001 - 20,000	0.045	15.0 m ³
	20,001 - 40,000	0.04	20.0 m ³
	40,001 - 75,000	0.035	40.0 m ³
	75,001 - 100,000	0.03	60.0 m ³
All other ships	more than 100,000	0.025	75.0 m ³
	up to 10,000	0.03	2.2 m ³
	more than 10,000	0.03	5.0 m ³

On paying the disposal charges, the vessel receives the right to waste disposal pursuant to this tariff.

On exceeding the maximum quantity of ship waste pursuant to MARPOL Annex V, disposal of the additional quantities is charged separately at cost.

MINIMUM CHARGE

per vessel and port call	15.30 €
--------------------------	---------

Attention is drawn to the fact that the disposal charges do not cover the disposal of particularly complex ship waste from the scope of MARPOL 73/78 Annex V such as light bulbs, fluorescent tubes, batteries, paint residues, oil and paint containers, oil filters, chemicals in containers, electrical devices, ash/soot, filter and scrubber residues, fishing utensils and the disposal of waste needing special supervision pursuant to the Waste Directory Ordinance (AVV). The costs for the disposal of this kind of waste must be paid directly by the shipping company, owner or charterer.

The disposal charges include a proportionate disposal charge per category, amounting to 0.018 € per GT for oily fluids from operating the ship (MARPOL Annex 1) and of 0.001 € per GT for sewage from ships (MARPOL Annex IV). (As soon as the new facility will be in operation, cruise ships are excluded from the reimbursement

system for MARPOL Annex IV. Chapter 22. Vessel waste water applies.)

The proportionate disposal charge covers the disposal of a maximum quantity whose disposal costs correspond to the calculated disposal charge. On presentation of an invoice for disposal of the fluids, SEEHAFEN KIEL refunds the itemised invoice amount of the waste disposal company. The refund will be paid at most up to the amount of the ascertained disposal charge. Any further disposal costs are to be paid separately by the shipping company, owner or charterer.

The vessels will be provided with suitable port collection devices for the disposal of ship waste pursuant to MARPOL Annex V, apart from the disposal of particularly complex waste and waste needing special supervision pursuant to the Waste Directory Ordinance (AVV).

It must be possible to pump ship waste from ship operations pursuant to MARPOL Annex I out of the tanks at normal ambient temperature. The pumping capacity for ships up to a size of 499 GT must be at least 1 cbm/hour and at least 2 cbm/hour for ships of more than 499 GT. International land connections must be available.

The disposal charges do not cover the disposal of cargo residues. The costs for the disposal of cargo residues are to be paid separately by the user of a collection device.

On request, SEEHAFEN KIEL can grant discounts for vessels equipped with suitable technical installations for the separation and/or avoidance of waste.

Disposal shall take place during the regular port working hours. The ship's management shall dispose of the ship wastes correctly in the provided containers according to the instructions issued by SEEHAFEN KIEL.

The ship disposal charge is reduced by 70 % for ships/vessels that have been completely exempt from the disposal obligation by the port authority pursuant to Section 7 HafEntsVO.

The disposal obligation and provision of collection devices for ship waste applying to SEEHAFEN KIEL is subject to the registration period defined in Section 6 HafEntsVO.

SEEHAFEN KIEL can decide at its own discretion whether to demand an appropriate deposit from the vessels.

The limiting values for consistence and substance according to the effective drainage statute of the capital city of Kiel must be respected.

Acceptance and disposal of grey and/or black water per t	2.83 €
Acceptance and disposal of grey and/or black water via tank lorry or barge	on request

43. Water charges (fresh water)

Water charges are to be paid for taking drinking water and boiler water directly at the quay facilities.

WATER CHARGES

for quantities of up to 100 t per t	3.85 €
for every further tonne	2.55 €
but at least	16.32 €

44. Electricity charges

Electricity charges are to be paid for the consumption of electricity, calculated according to consumption.

ELECTRICITY CHARGES

per kWh	0.39 €
---------	--------

Special rates can be agreed with large-scale consumers and long-term users. This also applies to

the power consumption of official vehicles used for public security and order.

45. Storage charges

Storage charges are to be paid for the storage or preparation of cargo or load units outdoors on the quays for which rent is not already levied.

CHARGES FOR STORING CARGO OUTSIDE

for cargo arriving on or departing from ships as from the 3rd day after delivery or after being unloaded from the ship

a) Goods category I	per t and day	0.17 €
b) Goods category II	per t and day	0.24 €
c) Goods category III	per t and day	0.30 €
d) Goods category IV	per t and day	4.72 €

for brand-new import and export passenger cars arriving or departing on ships from the 1st day after delivery or being unloaded from the ship

per vehicle and day	0.86 €
---------------------	--------

for other vessels at the Ostuferhafen from the 3rd day after unloading the ship or its delivery

up to 6 m long per unit and day	4.38 €
more than 6 m long per unit and day	8.66 €

other load units at the Ostuferhafen up to 8 m long arriving on or departing from ships as from the 3rd day after delivery or being unloaded from the ship

per unit and day	8.87 €
------------------	--------

load units more than 8 m long

per unit and day	16.65 €
------------------	---------

for containers, load units and other vehicles arriving or departing at the city terminal Schwedenkai and Norwegenkai by ship at/from Schwedenkai as from the day of arrival plus one day as well as Sundays and bank holidays are free. From 0:00 o'clock of the 3rd day

at the Schwedenkai per unit and day	24.00 €
at the Norwegenkai per unit and day	40.00 €

The rates are doubled for every day from the first day for cargo, vehicles, transport containers and cargo units that are not arriving or departing on ships. Special charges can be agreed for longer storage periods. Special charges will be agreed for storing goods under roof.

46. Surface charges

Surface charges are payable for the exclusive use of quay areas for which quay charges or storage charges are not already levied under this tariff or for which a rental agreement has been concluded.

The surface charges are levied on a weekly basis. A minimum of two weeks is charged for.

THE SURFACE CHARGES AMOUNT TO

for every started week per m ²	1.71 €
--	--------

The surface area being used is ascertained by SEEHAFEN KIEL's own measurements.

Exclusive use requires prior consent from SEEHAFEN KIEL; whereby in particular the size and location of the area is defined by SEEHAFEN KIEL. Even after consent has been granted, SEEHAFEN KIEL is entitled at any time to prohibit use and to demand that the area is cleared. In this case, the company shall clear the area within the deadline stipulated by SEEHAFEN KIEL, which must give at least 24 hours; where applicable, SEEHAFEN KIEL shall refund the company with any charges paid in advance.

47. Crane charges

Crane charges are to be paid for using cranes with crane operators.

CRANE CHARGES FOR SEA TRANSHIPMENT

for handling general cargo with hook operation per crane and hour		
for individual weights	up to 25 t	260.00 €
	up to 40 t	410.00 €
	up to 65 t	480.00 €
	up to 100 t	660.00 €
	more than 100 t	on request

for handling bulk goods with grab operations	on request
---	------------

for handling containers (full or empty) per crane/per started hour	315.00 €
---	----------

Special charges can be agreed for uninterrupted handling of large lots.

For waiting periods during crane handling per started half hour	132.00 €
--	----------

The crane charges include the services of the crane operator during normal working hours. Chapter 48 stipulates the surcharges to be paid outside normal working hours.

48. Provision of labour

The following charges are levied for the provision of labour during normal working hours (Mondays to Fridays from 7 a.m. to 4 p.m. and Saturdays from 7 a.m. to 1 p.m. amounting to per man hour	46.00 €
--	---------

The following surcharges are levied for the provision of manpower by SEEHAFEN KIEL

outside the normal working hours:

weekdays until 10 p.m.
per man hour 19.00 €

weekdays after 10 p.m.,
Saturdays after 1 p.m. and
on Sundays and public holidays
per man hour 46.00 €

If the service and supply does not
directly follow normal working hours
travel costs shall be charged
per employee 75.00 €

Waiting periods
per started man hour 46.00 €

Man hours outside this tariff, which
are not named on request

49. Overhead cost

For services ordered beyond this tariff at third parties on behalf of our customer, 15 % of the order value is charged as overhead cost per order.

FINAL RULES AND CONDITIONS

In case of any divergence between the English and the German version of this tariff the German tariff shall prevail.

LIST OF CARGO CATEGORIES

Cargo category I

Bulk goods and loose goods suitable for pouring or grabbing; pulpwood.

Cargo category II

Bulk goods if not loose and suitable for pouring or grabbing; sugar; grain; feedstuffs; rapeseed oil moulding sand; coal; scrap; fuels or lubricants; logs and sawn wood; cargo in containers or on trucks/trailers roll-flats; general cargo.

Cargo category III

Paper and pulp unless named in goods category II.

Cargo category IV

Cargo for carriage pursuant to GGVS_{ee} (Dangerous Goods Regulations for transport by Sea).

Cargo types not named above and explosives on request.

DOWNLOAD

You will find this tariff on-line at
www.portofkiel.com/tarife_ab.html

BANK DETAILS

Bank accounts of SEEHAFEN KIEL GmbH & Co. KG:

Commerzbank Kiel branch
BIC COBADEFFXXX
IBAN DE88 2104 0010 0717 1200 00

Bremer Landesbank
BIC BRLADE22XXX
IBAN DE91 2905 0000 1051 9860 03

Foerde Sparkasse
BIC NOLADE21KIE
IBAN DE69 2105 0170 0092 0151 55

COMMENCEMENT

This tariff is valid from 1st January 2019.

Kiel, 17th December 2018

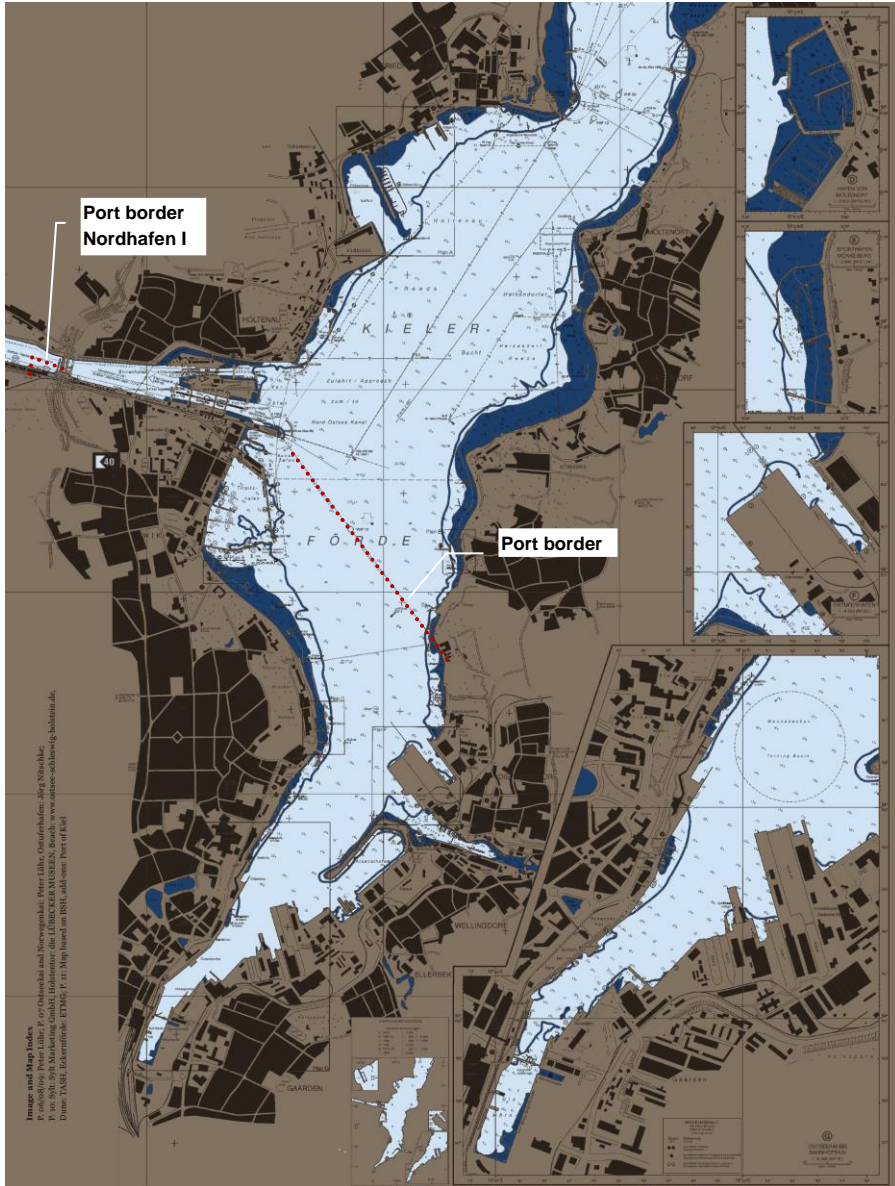
SEEHAFEN KIEL GmbH & Co. KG



Dr Dirk Claus
Managing Director

ANNEX TO KIEL PORT AND QUAY TARIFF

Port area covered by the tariff



FOR YOUR NOTES

KIEL. GERMANY.

Welcome to our landing page:
www.portofkiel.com